



PROJECT PORTFOLIO

吉大工程

工程實績



221416 新北市汐止區新台五路一段97號25樓之10
25F-10, No. 97, Sec. 1, Xintai 5th Rd., Xizhi Dist., New
Taipei City 221416, Taiwan

TEL: 886 2696 3280

Fax: 886 2697 5581

<https://www.gtecsi.com.tw/>

TABLE OF CONTENTS

- 02** 工程實績分佈
PROJECT DISTRIBUTION
- 03** 工程實績
PROJECT PORTFOLIO
- 04** 工程圖輯
PROJECT GALLERY

工程實績分佈 PROJECT DISTRIBUTION



PROJECTS CATEGORIES

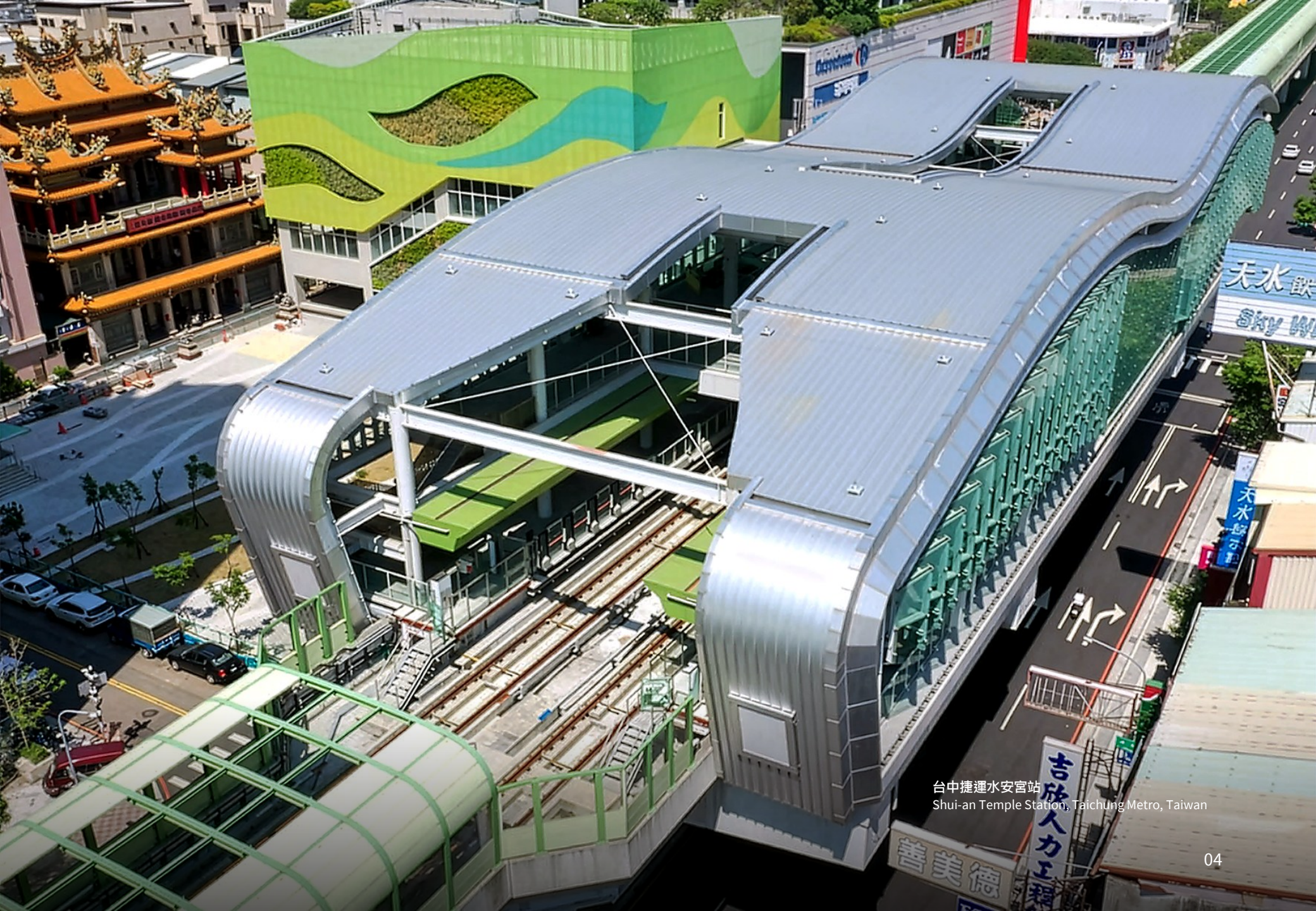
專案類別

- Rail Engineering 軌道交通
- Energy Project 能源工程
- Building Services 建築機電
- Medical Engineering 醫療機電
- Marine Engineering 海事工程
- Mechanical 機械安裝
- Fire Protection 消防工程
- System Integration 系統整合

工程實績 PROJECT PORTFOLIO

序號 No.	年度 Year	專案名稱 Project Name	客戶 Client	業主 Orderer	工程類別 Category	狀態 Status
1	2011	林口長庚醫院質子暨RTO治療中心：機電與設備安裝工程 Linkou CGMH Proton & RTO Therapy Center: E&M & Equipment Installation	長庚醫院 CGMH	亞通 ATE	醫療機電工程 Medical E&M Engineering	完工 Completed
2	2015	高雄長庚醫院質子暨RTO治療中心：機電與管路系統工程 Kaohsiung CGMH Proton & RTO Therapy Center: E&M & Piping Works	長庚醫院 CGMH	亞通 ATE	醫療機電工程 Medical E&M Engineering	完工 Completed
3	2016	(MPGC) 1.5 萬噸級海水取排水系統：鋼板樁與角樁工程 (MPGC) 151,200 T/H Sea Water Intake & Discharge System: Piling Works	SMC SMC	亞通 ATE	海事基礎工程 Marine Foundation Works	完工 Completed
4	2019	台中電廠太陽光電新建工程 (設計/採購/施工) Taichung Power Plant Solar PV Project (EPC)	台電 TPC	亞通 ATE	再生能源 EPC Renewable Energy EPC	完工 Completed
5	2019	安坑輕軌：水電、環控與機電整合工程 Ankeng LRT: E&M, HVAC & Environmental Control Systems	新亞建設 NEWASIA	亞通 ATE	軌道機電系統 Rail E&M Systems	完工 Completed
6	2021	大潭電廠七號機：機械設備安裝工程 Datan Power Plant Unit 7: Mechanical Equipment Installation	台電 TPC	亞通 ATE	機械設備安裝 Mechanical Installation	完工 Completed
7	2021	大潭電廠七號機：消防管線系統工程 Datan Power Plant Unit 7: Fire Protection Piping Systems	台電 TPC	亞通 ATE	消防工程 Fire Protection Systems	完工 Completed
8	2022	台立方案：再生能源燃料進料與存儲系統整合 Renewable Energy Biomass Fuel Handling & Storage System Integration	台朔重工 FHI	台朔重工 FHI	土木與系統整合 Civil & System Integration	完工 Completed
9	2023	忠泰世界 (JUT World) 新建工程：弱電與消防系統整合 JUT World Development: ELV & Fire Protection Systems Integration	忠泰建設 JUT	橋正 Chiao Jen	建築機電工程 Building E&M Services	完工 Completed
10	2023	台電離岸風電運維中心：機電、給排水及空調工程 TPC Offshore Wind O&M Center: E&M, Plumbing & HVAC Works	台電 TPC	瑞助營造 Reiju	能源基礎設施機電 Energy Infrastructure E&M	在建 IN Construction
11	2024	桃園捷運綠線系統整合工程 Taoyuan MRT Green Line System Integration Project	西門子 Siemens	亞通 ATE	軌道交通號誌系統 Rail Signaling Systems	在建 IN Construction
12	2024	豐坪溪水力發電計畫：水工機械與壓力鋼管工程 Fengping Hydropower Project: Hydro-mechanical & Penstock Works	森威能源 Shinfox	亞通 ATE	水力發電工程 Hydropower	在建 IN Construction

Updated: Apr. 2026

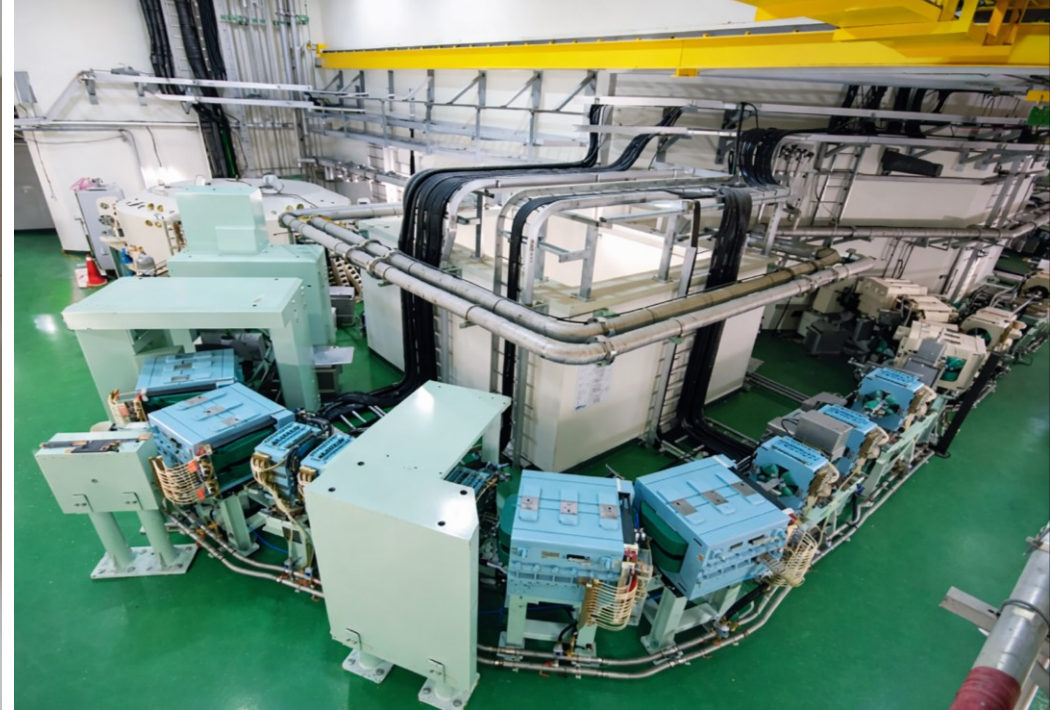


台中捷運水安宮站
Shui-an Temple Station, Taichung Metro, Taiwan



2085

安坑輕軌
Ankaang Light Rail, New Taipei City, Taiwan



林口長庚質子暨放射治療中心
Linkou Chang Gung Proton and Radiation Therapy
Center, Taiwan.



花蓮豐坪溪水力發電廠
Fengping River Hydropower Plant, Hualien, Taiwan



菲律賓馬利韋萊斯火力發電廠
Mariveles Thermal Power Plant, Philippines

吉大工程之每一步，皆為回應城市發展需求與環境變遷挑戰。從過去三十餘年之紮根，至未來智慧轉型之布局，公司始終篤信：工程不僅是鋼筋水泥與機電管線之組合，更承載人們生活與夢想。展望未來，吉大工程將持續深化機電核心技術，對接國家能源轉型與淨零碳排目標，以具體行動實踐企業社會責任，與城市同步成長，打造更美好之生活軌跡。

Every step we take is a deliberate response to the evolving needs of urban development and the mounting challenges of environmental change. From our deep-seated roots established over the past thirty years to our strategic roadmap for future smart transformation, we have always believed that engineering is far more than a mere combination of concrete, steel, and E&M systems—it is the vital vessel that carries people's lives and dreams. Looking ahead, our teams will continue to refine our core E&M technical expertise, aligning our efforts with national energy transition and net-zero carbon goals. Through tangible actions, we fulfill our corporate social responsibility, growing in perfect synchrony with our cities to shape a better trajectory for all life.